

**AERODYNAMICS OF A SWIRLING FLUIDIZED BED**

**MOHD AL-HAFIZ BIN MOHD NAWI**

**A thesis submitted in  
fulfillment of the requirement for the award of the  
Degree of Master of Mechanical Engineering**



**Faculty of Mechanical and Manufacturing Engineering  
Universiti Tun Hussein Onn Malaysia**

**JUNE 2013**

## ABSTRACT

Swirling Fluidized Bed (SFB) is one of the fluidized bed systems that have potential to be widely used in the mineral processing, power generation and chemical industries. By using an annular bed and inclined injection of gas through the distributor in SFB it will archive a high performance in fluidization. A numerical simulation Computational Fluid Dynamics (CFD) and experimental work with Particle Image Velocimetry (PIV) has been used to investigate physical parameters that influence the type of plenum chamber, the distributor pressure drop and the uniformity of tangential velocity distribution. The study focused on the 60 blades distributor whereby the effect of two horizontal inclinations ( $12^\circ$  and  $15^\circ$ ) and tangential entry plenum chamber (single, double and triple). Three velocities component were analyzed; tangential velocity, radial velocity and axial velocity. In actual industrial applications, the axial velocity will create fluidization while the tangential velocity provides swirling effect. The presence of radial velocity can be explained as a consequence of centrifugal force generated by the swirling gas. The tangential velocity is the major velocity component in this study and it represents the velocity of the swirling air in the annular region of the bed. The uniformity of tangential velocity distribution and pressure drop is set as performance criteria and has been analyzed with statistical method; mean value, standard deviation & root mean square of difference (RMSD). The most significant finding in simulation configuration is the pressure drop of the distributor blade increased when a triple tangential entry plenum chamber along with horizontal inclination  $15^\circ$  has been applied which then create high tangential velocity. Only parameter for double tangential entry plenum chamber consists with horizontal inclination,  $12^\circ$  has been selected to validate with the PIV result. Comparison of the simulation result (CFD) and experimental data (PIV) are presented, and it is confirmed that good agreement is obtained.



PT. AUM  
PERPUSTAKAAN FUNKUTONAMINAH

## ABSTRAK

Sistem terbendalir terpusar (SFB) ialah salah sebuah sistem terbendalir yang berpotensi untuk di gunakan secara meluas di dalam pemrosesan mineral, penjaanaan kuasa dan industri kimia. Dengan aplikasi SFB yang berbentuk cecincin serta suntikan gas pada kecondongan pengedar ia mampu meningkatkan kecekapan di dalam sesebuah pembendaliran. Simulasi berangka iaitu kajian berangka berbantu komputer (CFD) dan kerja ujikaji dengan Particle Image Velocimetry (PIV) telah digunakan bagi membuat pengesahan parameter-parameter fizikal yang mempengaruhi jenis kebuk udara, susutan tekanan pengedar dan taburan keseragaman pada taburan halaju menyerong. 60 bilah pengedar di mana kesan terhadap dua kecenderungan mengufuk ( $12^\circ$  dan  $15^\circ$ ) dan kemasukan menyerong (satu, dua dan tiga) telah di kaji. Tiga halaju komponen telah di nilai iaitu halaju menyimpang, halaju jejarian dan halaju paksi. Dalam aplikasi perindustrian sebenar, halaju paksi akan mewujudkan pembendaliran manakala halaju menyerong akan menghasilkan kesan pusaran. Kehadiran halaju jejarian dapat di lihat apabila terhasilnya daya empur akibat dari gas yang terpusar. Dalam kajian ini, halaju menyerong merupakan halaju utama dan ia mewakili halaju udara yang berpusar dalam ruang kebuk cecincin. Dengan menggunakan kaedah statistik (min, sisihan piawai & perbezaan punca kuasa dua (RMSD)) keseragaman pada taburan halaju menyerong dan susutan tekanan menjadi kriteria utama dalam pengukuran prestasi. Penemuan yang paling penting dalam konfigurasi bersimulasi ialah susutan tekanan bilah pengedar telah meningkat apabila kebuk udara pada tiga ruang kemasukan menyerong dengan kecondongan mengufuk  $15^\circ$  telah mewujudkan halaju menyerong yang tinggi. Hanya kebuk udara pada dua ruang kemasukan menyerong dengan kecondongan mengufuk,  $12^\circ$  telah dipilih bagi mengesahkan keputusan ujikaji PIV. Perbandingan yang amat baik di antara data simulasi (CFD) dan keputusan ujikaji (PIV) telah di capai dan di persetujui.

## CONTENTS

CHAPTER	TITLE	PAGE
	CONFIRMATION	i
	TITLE PAGE	ii
	DECLARATION	iii
	SUPERVISOR CONFORMATION	iv
	TESTIMONY	v
	ACKNOWLEDGEMENT	vi
	ABSTRACT	vii
	ABSTRAK	viii
	CONTENTS	ix
	LIST OF SYMBOL	xiii
	LIST OF TABLES	xiv
	LIST OF FIGURES	xvi
	LIST OF EQUATION	xx
	LIST OF APPENDIX	xxi
<b>I</b>	<b>INTRODUCTION</b>	<b>1</b>
	1.1 Background of Study	3
	1.2 Problem Statement	3
	1.3 Objective	3
	1.4 Scope of Study	4
	1.5 Significance of Study	4



<b>II</b>	<b>LITERATURE REVIEW</b>	<b>6</b>
2.1	Fluidization	6
2.2	Swirling Fluidized Bed (SFB)	6
2.3	Related Works	7
2.3.1	Toroidal Fluidized Bed (Torbed)	7
2.3.2	Annular Spiral Distributor	8
2.4	CFD Analysis of Air Distribution in a Fluidized Bed	11
2.4.1	Static Bed with 4 Gas Inlet & 4 Chimney Outlets	12
2.4.2	Static Bed with Radial Chimney	14
2.4.3	Plenum Chamber and Hub Geometries	16
2.5	Particle Image Velocimetry (PIV) Analysis of Air Distribution	17
2.5.1	Stereoscopic PIV	18
2.5.1.1	PIV Stereoscopic Camera Arrangeent and Calibration	19
2.5.1.2	Stereoscopic PIV Studies on the Swirling Flow Structure in a Gas Cyclone	19
2.5.1.3	Stereoscopic PIV Studies on Plenum Chamber of SFB	21
<b>III</b>	<b>METHODOLOGY</b>	<b>23</b>
3.1	Experimental Set-up	23
3.1.1	Instrumentations	23
3.1.2	Description of Experiment & Apparatus	25
3.1.3	Experimental Procedure	28
3.1.4	Flowchart of Experimental Study	31
3.2	Numerical Methodology	32
3.2.1	SolidWork	32
3.2.1.1	Number of Blade	32
3.2.1.2	Angle of Blade	32



3.2.1.3	Type of Tangential Entry Plenum Chamber	33
3.2.2	Pre-Processing: Geometry and Mesh	34
3.2.2.1	Boundary Type	34
3.2.2.2	Meshing	35
3.2.3	Solver: Solution Techniques	36
3.2.3.1	Boundary Conditions	36
3.2.3.2	Grid Sensitivity Study	37
3.2.3.3	Running the Simulations	37
3.2.4	Post-Processing: Results	37
3.2.5	Governing Equation	38
3.2.6	Flowchart of Simulation Investigation	40

#### **IV RESULTS AND DISCUSSION 40**

4.1	Grid Sensitivity Study	40
4.1.1	Meshing Scheme Study	42
4.1.2	Results of Grid Sensitivity Study	43
4.2	Validation of the Simulation Investigation	44
4.2.1	Turbulence Model	44
4.2.2	Quantitative Validation	48
4.2.3	Validation of Velocity Component	48
4.2.4	Flow Visualization	51
4.3	Pressure Drop	54
4.4	Velocity Distribution	55
4.5	Tangential Velocity Distribution	59
4.6	Radial Velocity Distribution	63
4.7	Axial Velocity Distribution	67
4.8	Statistical Analysis	70
4.8.1	High Mean Tangential Velocity	71
4.8.2	Uniformity of Tangential Velocity Distribution	71
4.8.3	Low Pressure Drop	72
4.9	Determining an Optimum Bed Design	73
4.10	Summary	74



<b>V</b>	<b>CONCLUSION AND RECOMMENDATION</b>	<b>77</b>
	5.1 Summary of Finding	78
	5.2 Recommendations for Future Studies	78
	<b>REFERENCES</b>	<b>79</b>
	<b>APPENDICES</b>	<b>84</b>



**PTTA UTHM**  
PERPUSTAKAAN TUNKU TUN AMINAH

## LIST OF SYMBOL

$A$	–	cross-sectional area of the bed
$AV$	–	axial velocity
$D_P$	–	internal diameter plenum chamber
$D_I$	–	internal diameter tangential entry
$g$	–	gravitational acceleration
$m$	–	mass of particles
$P$	–	pressure
$P_f$	–	pressure at the facet average
$P_r$	–	pressure reference
$R_D$	–	radius of distributor
$R_C$	–	centre conical base radius
$RV$	–	radial velocity
$TV$	–	tangential velocity
$VM$	–	velocity magnitude
$v_r$	–	radial velocity
$v_\theta$	–	tangential velocity
$v_z$	–	axial velocity
$v$	–	free stream velocity
$v_c$	–	centre velocity

### Greek Symbols

$\mu$	–	kinematics viscosity
$\rho$	–	density
$\rho_f$	–	fluid density
$\rho_p$	–	density of particles



## LIST OF TABLES

TABLES	TITLE	PAGE
2.1	Experimental details for the comparison of type of plenum chamber	10
3.1	Cases of parametric study on swirling fluidized bed distributor	37
4.1	Scheme A meshing parameters	42
4.2	Scheme B meshing parameters	42
4.3	Scheme C meshing parameters	42
4.4	Scheme D meshing parameters	43
4.5	Summary of grid sensitivity study	43
4.6	RMSD for mean velocity distribution for velocity magnitude	47
4.7	RMSD for mean velocity distribution for tangential velocity	47
4.8	RMSD for mean velocity distribution for radial velocity	47
4.9	RMSD for mean velocity distribution for axial velocity	47
4.10	Static pressure data on blade 12° horizontal inclination	55
4.11	Static pressure data on blade 15° horizontal inclination	55
4.12	Analysis on high mean tangential velocity on blade 12° horizontal inclination	71
4.13	Analysis on high mean tangential velocity on blade 15° horizontal inclination	71
4.14	Analysis on uniformity of tangential velocity distribution on blade 12° horizontal inclination	72
4.15	Analysis on uniformity of tangential velocity distribution on blade 15° horizontal inclination	72
4.16	Analysis on low pressure drop on blade 12° horizontal inclination	73



PT TAAUTHM  
PERPUSTAKAAN TUNJUKKAN AMINAH

<b>4.17</b>	Analysis on low pressure drop on blade 15° horizontal inclination	<b>73</b>
<b>4.18</b>	Analysis considering all criteria	<b>73</b>



**PTTA UTHM**  
PERPUSTAKAAN TUNKU TUN AMINAH

## LIST OF FIGURES

FIGURE	TITLE	PAGE
1.1	Swirling fluidized bed with a conical centre body	2
2.1	Toroidal fluidized bed (TFB) reactor	7
2.2	The annular spiral distributor and the air flow is in the counterclockwise direction	9
2.3	Configuration of blade SFB	9
2.4	CFD simulated airflow for a modified plenum chamber design cases	12
2.5	The concept of a rotating fluidized bed in a static geometry	13
2.6	Static bed with radial chimney	15
2.7	Three-inlets chamber with a full-length cylindrical hub at the centre	17
2.8	Experimental arrangement for particle image velocimetry (PIV) in a wind tunnel	18
2.9	Scheimpflüg stereoscopic camera configuration	18
2.10	Optical arrangement of laser light sheet and cameras	19
2.11	Tangential velocity distribution in the cylindrical separation space across Both (a) 0-180° and (b) 90-270° sections	20
2.12	Velocity vector on the top plane (above), mid plane (centre) & bottom plane (bottom); (a) PIV; (b) CFD	21
3.1	Positioning of the pitot static probe inside plenum inlet pipe	24
3.2	Measurement of pressure drop at acrylic column	25
3.3	Schematic diagram of SFB experimental set-up in a SFB	26



PTTA UTHM  
PERPUSTAKAAN TUNKU TUN AMINAH

<b>3.4</b>	Location of line reference in SFB	<b>27</b>
<b>3.5</b>	Positioning of camera on the experiment set-up in a SFB	<b>29</b>
<b>3.6</b>	Angle position of camera on the experiment set-up of SFB	<b>30</b>
<b>3.7</b>	Number of 60 blade distributor	<b>32</b>
<b>3.8</b>	Angle of blade distributor inclination of 12° and 15°	<b>33</b>
<b>3.9</b>	Type of tangential entry plenum chamber	<b>33</b>
<b>3.10</b>	Boudry type assigned to the geometries of SFB	<b>34</b>
<b>3.11</b>	Volume meshing and example of grid in the SFB	<b>35</b>
<b>4.1</b>	Comparing of tangential velocity deviation between schemes	<b>44</b>
<b>4.2</b>	Comparing PIV results with various turbulence models for SFB	<b>46</b>
<b>4.3</b>	Comparing PIV results with CFD for SFB at the line references on blade distributor	<b>50</b>
<b>4.4</b>	Velocity vector (m/s) on in the range of 60°-120° for PIV velocity component.	<b>52</b>
<b>4.5</b>	Velocity vector (m/s) on in the range of 60°-120° for CFD velocity component.	<b>52</b>
<b>4.6</b>	Plane contour on the area of 60°-120° for PIV velocity component.	<b>53</b>
<b>4.7</b>	Plane contour on the area of 60°-120° for CFD velocity component.	<b>53</b>
<b>4.8</b>	Trapezoidal Opening	<b>54</b>
<b>4.9</b>	Comparing pressure drop between type of tangential entry plenum chamber with blade inclination	<b>54</b>
<b>4.10</b>	Line references an each position studies	<b>56</b>
<b>4.11</b>	Velocity magnitude on the single tangential entry plenum chamber; 12°	<b>56</b>
<b>4.12</b>	Velocity magnitude on the single tangential entry plenum chamber; 15°	<b>57</b>
<b>4.13</b>	Velocity magnitude on the double tangential entry plenum chamber; 12°	<b>57</b>
<b>4.14</b>	Velocity magnitude on the double tangential entry plenum chamber; 15°	<b>58</b>



PT TAAUTHM  
PERPUSTAKAAN TUN TUN AMINAH

<b>4.15</b>	Velocity magnitude on the triple tangential entry plenum chamber; 12°	<b>58</b>
<b>4.16</b>	Velocity magnitude on the triple tangential entry plenum chamber; 15°	<b>59</b>
<b>4.17</b>	Tangential velocity on the single tangential entry plenum chamber; 12°	<b>60</b>
<b>4.18</b>	Tangential velocity on the single tangential entry plenum chamber; 15°	<b>60</b>
<b>4.19</b>	Tangential velocity on the double tangential entry plenum chamber; 12°	<b>61</b>
<b>4.20</b>	Tangential velocity on the double tangential entry plenum chamber; 15°	<b>61</b>
<b>4.21</b>	Tangential velocity on the triple tangential entry plenum chamber; 12°	<b>62</b>
<b>4.22</b>	Tangential velocity on the triple tangential entry plenum chamber; 15°	<b>62</b>
<b>4.23</b>	Radial velocity on the single tangential entry plenum chamber; 12°	<b>63</b>
<b>4.24</b>	Radial velocity on the single tangential entry plenum chamber; 15°	<b>64</b>
<b>4.25</b>	Radial velocity on the double tangential entry plenum chamber; 12°	<b>64</b>
<b>4.26</b>	Radial velocity on the double tangential entry plenum chamber; 15°	<b>65</b>
<b>4.27</b>	Radial velocity on the triple tangential entry plenum chamber; 12°	<b>65</b>
<b>4.28</b>	Radial velocity on the triple tangential entry plenum chamber; 15°	<b>66</b>
<b>4.29</b>	Axial velocity on the single tangential entry plenum chamber; 12°	<b>67</b>
<b>4.30</b>	Axial velocity on the single tangential entry plenum chamber; 15°	<b>68</b>
<b>4.31</b>	Axial velocity on the double tangential entry plenum chamber; 12°	<b>68</b>



<b>4.32</b>	Axial velocity on the double tangential entry plenum chamber; 15°	<b>69</b>
<b>4.33</b>	Axial velocity on the triple tangential entry plenum chamber; 12°	<b>69</b>
<b>4.34</b>	Axial velocity on the triple tangential entry plenum chamber; 15°	<b>70</b>



**PTTA UTHM**  
PERPUSTAKAAN TUNKU TUN AMINAH

## LIST OF EQUATIONS

EQUATION	TITLE	PAGE
3.1	Bernoulli's Equation	24
3.2	Bernoulli's Equation (Derived from Equation 3.1)	24
3.3	Navier-Stokes Equation for steady flow case	38
3.4	Continuity Equation (Cylindrical Coordinates)	38
3.5	Transport Equations for Reynolds Stress Model (RSM)	38
3.6	Transport Equations for Standard $k-\varepsilon$ Model	39
3.7	Transport Equations for Renormalization (RNG) $k-\varepsilon$ Model	39
3.8	Transport Equations for Realizable $k-\varepsilon$	39
4.1	Root Mean Square of Difference (RMSD)	46



PTFAUTHM  
PERPUSTAKAAN TUNJUKU AMINAH

**LIST OF APPENDIX**

<b>APPENDIX</b>	<b>TITLE</b>	<b>PAGE</b>
<b>A</b>	Project Planning	<b>85</b>
<b>B</b>	Swirling Fluidized Bed Model	<b>87</b>
<b>C</b>	Modeling Geometries	<b>88</b>
<b>D</b>	Fluidized Bed Horizontal Configuration (Experimental Set-Up of Swirling Fluidized Bed)	<b>89</b>
<b>E</b>	Journal & Acceptance Paper	<b>90</b>



PTTA UTHM  
PERPUSTAKAAN TUNKU TUN AMINAH



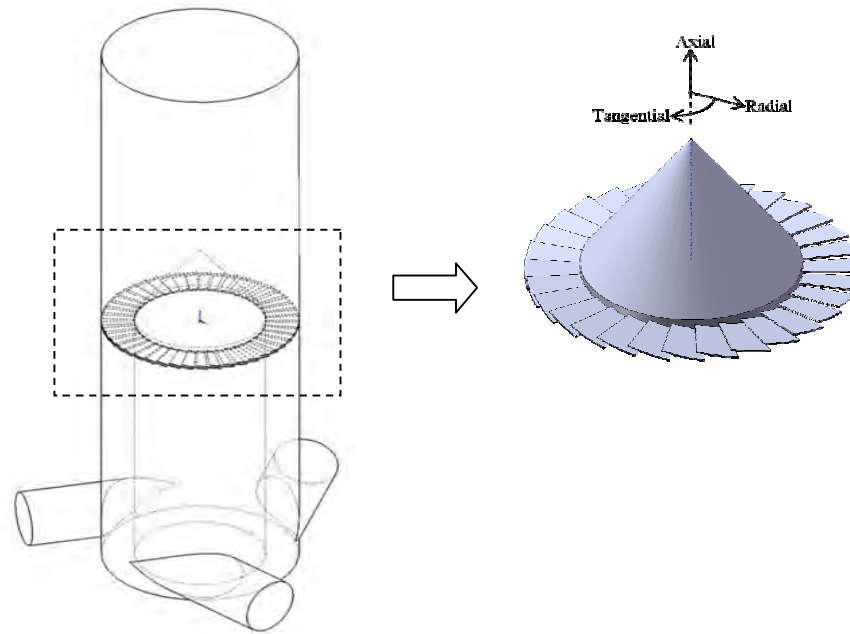
## CHAPTER I

### INTRODUCTION

Fluidized beds were been used in many chemical process industries are involved with gas-solid processing. When process gas passes through the bed, the force must be large enough to fluidize the bed weight. Then the particle normally will be fluidized and be having properties and characteristic of a liquid. This technique is truly compatible in industrial processes such as combination, gasification of solid fuels, drying of particles, particle heating, oxidation, metal surface treatments and catalytic and thermal cracking (Howard, 1989). Different type of bed particle required a containing vessel with porous base through which the gas processing can be exerted to the bed.

One of the recent developments in providing a variant in fluidized bed operation is the SFB, which provides swirling motion inside the bed apart from fluidization (Gupta and Sathiyamoorthy, 1999). In contrast with conventional fluidization, in SFB the fluidizing medium enters the bed at an inclination to the horizontal directed by a suitable design of a distributor (Wellwood, 1997).

Currently, various configurations are available in accordance to bed geometry, centre bodies, fraction of open area, gas flow rate and so on. Several modifications in fluidized beds have been considered by various researchers to overcome those problems, achieve better contact between gas and solid phases such that the transfer rates are improved and purposed a generating swirl flow in a bed of solids (Harish Kumar and Murthy, 2010). A typical SFB is depicted in Figure 1.1.



**Figure 1.1:** Swirling fluidized bed with a conical centre body

The purpose of this study is to gain fundamental understanding on the aerodynamic characteristics inside a Swirling Fluidized Bed (SFB) that will optimize the bed design towards various industrial applications. Although, the publication of the SFB and operating equipment's with a similar principle to the SFB seem commercially available, study deeper influence types of the plenum chamber along with blade distributors are rather scanty.

Hence, this study proposes a full geometry numerical study of the SFB via a Computational Fluid Dynamics (CFD) approach. Commercial CFD package GAMBIT 2.4.6 and FLUENT 6.3.26 in UTHM has been held to investigate the velocity distribution and pressure drop influence the type of plenum chamber. Validation from the CFD work has been carried out through laser measurement technique, namely Particle Image Velocimetry (PIV) which is also available in UTHM. The findings will be useful for scale-up and erection of actual gas-solid contacting systems such as dryers and combustors which use the swirling flow principles.

## 1.1 Background of Study

A SFB consists of an annular distributor along with the number of blades arrangements at an angle to the horizontal inclination were injected of gas through the distributor. Influence of various types of the plenum chamber the SFB gives better fluidization compare to conventional fluidized bed. SFB has several advantages such as a good quality fluidization through distributor and having a low distributor pressure drop. Though a number of beds are widely used in many applications operations such as the rotating bed, vortexing bed and swirling bed, only limited study has been reported. Therefore, a detailed aerodynamics study on the SFB has been highlighted to address some of the limitations of the SFB.

## 1.2 Problem Statement

The swirling fluidized bed is an outcome of studies carried out in order to overcome disadvantages of the conventional fluidized bed (Sreenivasan and Raghavan, 2002; Ozbey and Soylemez, 2005; Safiah *et al.*, 2008; Shu *et al.*, 2007). Although equipments operating with swirling principles are available commercially, the fundamental aspects regarding air flow distribution inside the bed, particularly the effect of various distributor configurations has never been published as far as author's knowledge. A number of parameter affects the air flow distribution inside the SFB; namely number of blades, blade inclination which directs the flow at certain angle, annular width, type and geometry of the centre body and bed aspect ratio such as diameter, height and etc. It'll be a fruitful endeavour to investigate these parameters and the effect of the SFB's aerodynamic characteristics. Due to the highly complex nature of flow, numerical study via commercial CFD package has been applied in this study. Experimental study using PIV has been carried out for validation of the CFD simulations as well as flow visualization.

## 1.3 Objective

The investigation via CFD and PIV of aerodynamics characteristic in the plenum chamber with tangential entry of the SFB through to blade distributor along with a various horizontal inclination is more complex and different from the previous study.

Herewith, no work has been done and publishes especially on this case. The objective of this study is to identify the characteristic of air flow distribution with a various blade distributor configuration and the type of tangential entry plenum chamber in a Swirling Fluidized Bed (SFB).

#### 1.4 Scope of Study

The investigation involves an extracting data from numerical simulations and validated with experimental results. For the numerical investigation part, the commercial CFD package code FLUENT 6.3.26 has been used to analyze the characteristic of flow distributions in a Swirling Fluidized Bed (SFB) through various distributor configurations with tangential entry plenum chamber. While the experimental set-up has been carried out to validate the numerical simulation data by using a Particle Image Velocimetry (PIV).

This study will focus on the following below:

- i. Development of computation domain via solid modeling
- ii. A full geometry of SFB involving with variation of:
  - a. Number of blades (60 blades)
  - b. Tangential entry of air with single, double and triple inlet
  - c. Inlet velocity up to 2.25 m/s (0.02057 kg/s mass flow rate)
  - d. Variation of blade horizontal inclination angle (12° and 15°)
- iii. Grid sensitivity analysis
- iv. Investigation of flow distribution and pressure drop for all cases.
- v. Validation with 3-D PIV system (Dantec Dynamic)

#### 1.5 Significant of Study

The significance of this study is to identify the characteristic of flow distributions in a SFB for various distributor configuration and bed geometry. The findings will provide a better understanding of the nature of flow distribution in a SFB. An optimum design of SFB will tends a low pressure drop and produces a uniform

velocity through the distributor configuration. At the end of this research it's expected that this distributor configuration study might lead an optimum performance of SFB for the purposed work in utilization of biomass in worldwide industry.



PTTA UTHM  
PERPUSTAKAAN TUNKU TUN AMINAH

## CHAPTER II

### LITERATURE REVIEW

#### 2.1 Fluidization

Fluidization is an operation by which fine solids are transformed into a fluid like state through contact with a gas or liquid (Nag, 2008). This technology was known contacting method which has been used in processing industry such as reforming of hydrocarbons, coal carbonization and etc. It's also well recognized in nuclear engineering. The fluidization operation requires a containing vessel with a porous base which the fluid can be introduced to the bed. The porous base will distribute the fluids across the base of the bed uniformly (Howard, 1989). Porous base in the technology fluidized bed also known as a distributor. The bed will expands when imposed of upward flow rate then the bed can become higher from its initial (Howard, 1989).

#### 2.2 Swirling Fluidized Bed (SFB)

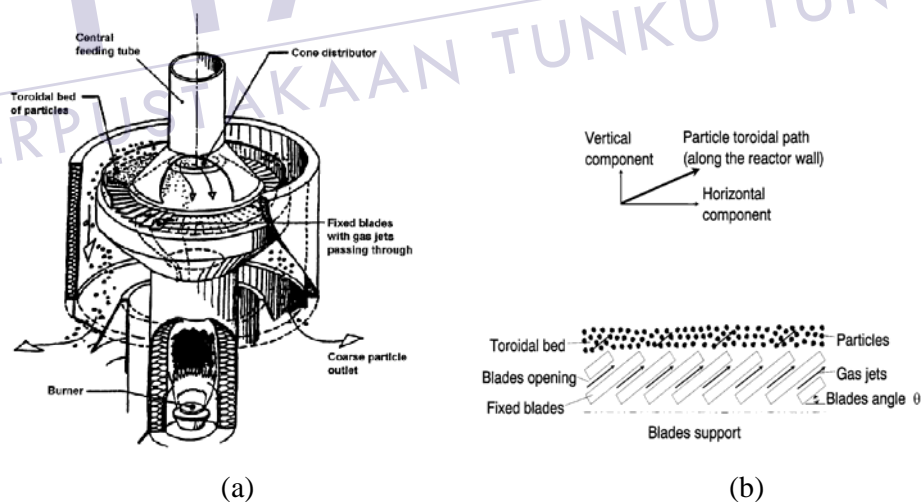
One of the recent developments in providing a variant in fluidized bed operation is the swirling fluidized bed (Wellwood, 1997). The swirling fluidized bed is a relatively new development. In contrast with conventional fluidization, in swirling fluidized beds the fluidizing medium enters the bed at an inclination to the horizontal. Directed thus by a suitable design of a distributor has been purposed by Wellwood (1997). The previous study by Kamil *et al.* (2007) shown swirling motion imparts special characteristics to the bed, which are considerably different from that of conventional fluidized beds.

## 2.3 Related Works

This topic presents a variant literature review on the conventional fluidized bed, which are relevant to the scope of this study. A good understanding of the swirling fluidized bed technology behavior such as parameters of hub geometries, various distributor configuration and type of plenum chamber was performed. Some related works to the current study are reviewed and reported as below:

### 2.3.1 Toroidal Fluidized Bed (Torbed)

Shu *et al.* (2000) reported among the most successful in fluidized bed reactor was the Torbed reactor. The Torbed reactor has been involving with the mass and heat transfer processing and it become the new thermal processing technology. This technology has been used successfully in many applications such as combustion, drying, gas scrubbing, calcination and mineral processing. The reactor has a gas distributor consisting of angled blades in an annular form at the reactor bottom, as shown schematically in Figure 2.1 (a).



**Figure 2.1:** Toroidal fluidized bed (TFB) Reactor; (a) Configuration of a TFB reactor and (b) Principle of particle movement in a TFB reactor

(Shu *et al.*, 2000)

Furthermore, Shu *et al.* (2000) stated, when an air forced pass through openings of the blades, the gas will be following into the blade array then a high

velocity jets keep the bed particles in suspension and rotating toroidally such as the principle is illustrated in Figure 2.1 (b). The Torbed reactor was developed based on experience for the effective exfoliation of perlite and vermiculite operated in the coarse particle mode.

This technology is now extended for fine particle processing. In the latter operation, the fine particles should be quickly fluidized and processed in the reactor chamber compare to the former conventional fluidized bed (Shu *et al.*, 2000). Regarding to this technology, the toroidal mixing motion of the particles ensures a high heat and mass transfer rates. As a conclusion, the torbed reactor could effectively process a very fine particle such as Geldart particle B, C, and D but large Geldart particle A was pointed out of the coarse portion due to kinematic limitations. Therefore, this study has been measured the air flow distribution in a Swirling Fluidized Bed (SFB) same as the driving force of particles to move over the upon entering blade spacing in Torbed reactor.

### 2.3.2 Annular Spiral Distributor

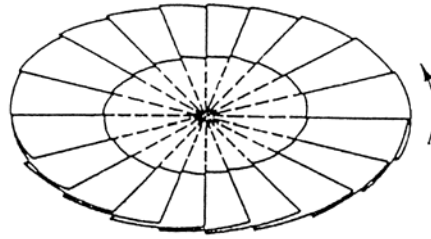
The concept of the annular distributor has been introduced from spiral distributor that proposed by Ouyang and Levenspiel (1986) as shown in Figure 2.2. The work of Sreenivasan and Raghavan (2002) in the hydrodynamic characteristics of a swirling fluidized bed which was studied experimentally as well as an analytical model is a pioneering to Kaewklum and Kuprianov (2010) studied.

The same principle from Shu *et al.* (2000) that inclined injection of gas into fluidized bed of particles by using an annular distributor blade it will produce a tangential motion along the region the swirling action of the bed overcomes certain particular shortcomings of the conventional shallow bed through at the swirling zone; no no bubbles are seen and no gas by passing occurs. Sreenivasan and Raghavan (2002) stated that the annular distributor would reduce the radial variation in the centrifugal force compared to the circular distributor. However, in order to derive maximum advantage of the swirl motion of particles, the bed appears more suited for operation in the shallow mode.



PTITA UTHM  
PERPUSTAKAAN TUN AMINAH

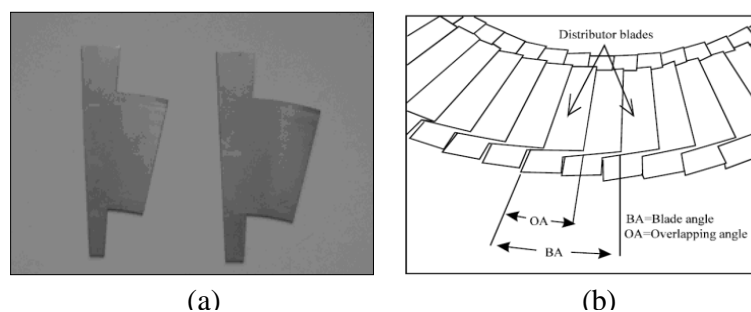




**Figure 2.2:** The annular spiral distributor and the air flow is in the counterclockwise direction (Ouvang and Levenspiel, 1986)

Due to a helical path, the gas has a slightly longer travel than the bed height and particle circulation does not depend on the bubbles. Therefore the feed, at one point of the swirling bed, it disperses quickly and thoroughly in the bed (Sreenivasan and Raghavan, 2002). However, influences of the fluid density are most significant followed by the blade angle and superficial gas velocity (Kamil *et al.*, 2007).

The similar study has been done by Batcha and Raghavan (2011) were focusing on a various blade distributor configuration. In spite of the potentials for vast industrial applications of the swirling fluidized bed, there are very few systematic studies of such a bed, though the principle has already been used in commercial equipment. As the stable mixing regime in the absence of bubbles and hence, of gas passing through slugging, swirl bed has a bright future in solid-gas processing. From this study, Batcha and Raghavan (2011) discovered that pressure drop of the bed increased with superficial velocity after minimum fluidization, in contrast to conventional fluidized bed. It was also found that the blade geometry has less effect on bed performance, compared to fraction of open area and particle size as shown in Figure 2.3.



**Figure 2.3:** Configuration of blade SFB; (a) Blades used to form annular and (b) Blade angle and blade overlapping (Batcha and Raghavan, 2011)

Kamil *et al.* (2007) studied an analysis of the relative importance of the operating parameters on the hydrodynamic characteristics of swirling fluidized beds, and he reported that two-dimensional (2D) analytical model, investigating on the influence of blade angle, gas and particle's density from their parametric analysis has been revealed that gas and particles density has the most influential parameters followed by the blade angle from their parametric analysis. The comparison of experimental from the previous study is shown in Table 2.1. The initial concept of an annular distributor has been purposed by Ouyang and Levenspiel (1986). Based on this new concept many researchers have shown their interested to study more depth through different parametric study.

**Table 2.1:** Experimental details for the comparison of type of plenum chamber

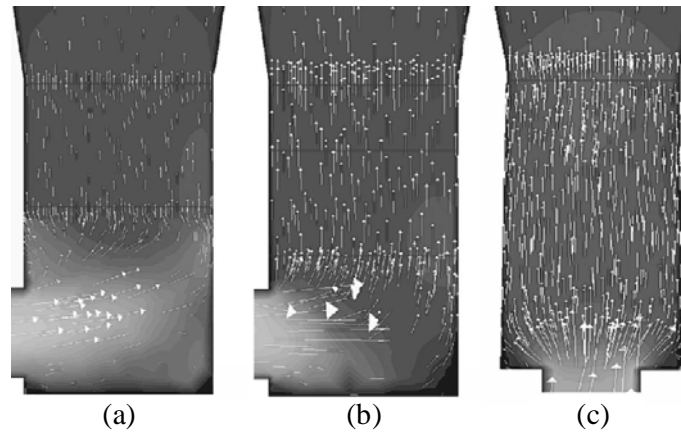
Researchers	Type of Plenum Chamber	Number of Blade Distributor	Angle of Inclination of Blade
Ouyang F. and Levenspiel O. (1986)	-	24 & 32	<i>Not Stated</i>
Wellwood (2000)	Tangential Entry	<i>Not Stated</i>	10°, 20° & 30° (Horizontal)
J. Shu <i>et al.</i> (2000)	Axial Entry	<i>Not Stated</i>	25° (Horizontal)
Sreenivasan B. and Raghavan V.R (2000)	Tangential Entry	60	12° (Horizontal)
Keawklum R. et al. (2009)	Axial Entry & Tangential Entry	11	14°
Kaewklum R. and Kuprianov V.I. (2009)	Axial Entry	11	14°
Chakritthakul S. <i>et al.</i> (2011)	Axial Entry	22	14°
Batcha M.F.M. and Raghavan V.R. (2011)	Tangential Entry	30 & 60	9° & 12° (Radial)
K.V. Vinod <i>et al.</i> (2011)	Tangential Entry	60	15° (Horizontal)
Sheng T.C. <i>et al.</i> (2012)	Radial Entry	60	10° (Horizontal)
K.V. Vinod <i>et al.</i> (2012)	Tangential Entry	60	9° (Radial) with 10° (Horizontal)
Arromdee P. and Kuprianov V.I. (2012)	Axial Entry	11	14°

As a conclusion, this study has chosen 60 blades with various blade angles of  $12^\circ$  and  $15^\circ$  horizontal inclination same as pilot scale of previous study from Batcha M.F.M. and Raghavan V.R. (2011) and K.V. Vinod *et al.* (2011). From here, the aerodynamic characteristic of a Swirling Fluidized Bed (SFB) should be known whether applying an overlapping blade angle will increase a high of tangential velocity and will decrease a lower blade distributor pressure drop.

#### 2.4 CFD Analysis of Air Distribution in a Fluidized Bed

A number of researchers have studied air distribution in fluidized bed system. Depypere *et al.* (2004) stated that the primary factor influencing fluidized bed processing is the airflow and its distribution. In order to understand the fluidization hydrodynamics of a specific fluid bed operation, it is essential to assess how airflow is distributed through the equipment. Numerical modeling techniques such as CFD offer a powerful tool to simulate fluid flow and heat transfer problems. Hereby, the mass conservation or continuity equation, the momentum conservation or Navier–Stokes transport equations and the energy conservation equation are numerically solved using commercial CFD package, FLUENT.

Depypere *et al.* (2004) reported that main outstanding difficulty for numerical modeling techniques still remains the simulation of the effects of fluid turbulence. In order to approximate the turbulence scales, the solution variables are decomposed into their mean and fluctuating components and the Reynolds Averaged Navier–Stokes (RANS) equations are obtained. The modified equations however contain additional unknowns that need to be determined using turbulence models in order to achieve closure. Based on a few equation turbulence models, the standard  $k-\varepsilon$  model has been selected and be applied into his numerical study. Figure 2.4 shows an example of CFD simulation results in the plenum chamber. The results are shown for the pre-distributor, the ceramic balls packing and the central bottom plenum air inlet modification, respectively.

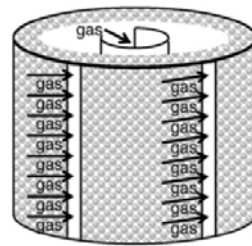


**Figure.2.4:** CFD simulated airflow for a modified plenum chamber design cases; (a) Pre-distributor, (b) Ceramic balls packing and (c) Bottom plenum air inlet (Depypere *et al.*, 2004)

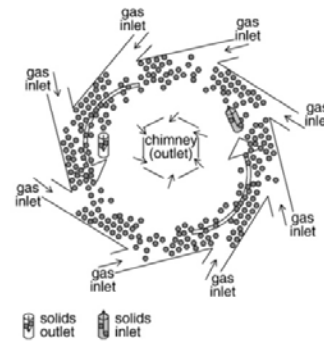
As a conclusion, this study has been used a commercial CFD package FLUENT to predict the air flow distribution in a Swirling Fluidized Bed (SFB) same as Depypere *et al.* (2004) are being used in his study. Depypere *et al.* (2004) has been study using a distributor more likely to conventional fluidized bed. Therefore, based on his study it will guide how to simulate of 3-D Swirling Fluidized Bed (SFB) geometry.

#### 2.4.1 Static Bed with 4 Gas Inlet and 4 Chimney Outlets

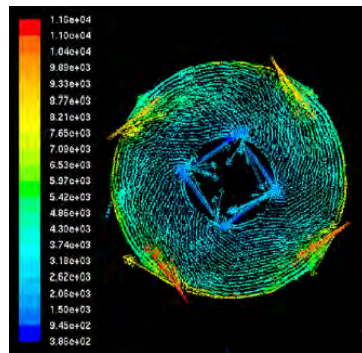
Wilde and Broqueville (2008) have introduced a rotating fluidized beds in a static geometry based on the new concept of injecting the fluidization gas tangentially in the fluidization chamber, via multiple gas inlet slots in its cylindrical outer wall. The tangential injection of the fluidization gas fluidizes the particles tangentially and induces a rotating motion, generating a centrifugal field. The concept of a rotating fluidized bed in a static geometry and the schematic representation of the 2-Phase CFD simulation of a rotating fluidized bed in a static geometry with 4 gas inlets, 4 chimney outlets, and a side solids inlet as shown in Figure 2.5.



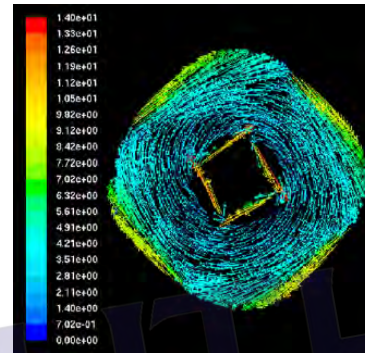
(a)



(b)



(c)



(d)

**Figure 2.5:** The concept of a rotating fluidized bed in a static geometry; (a) View an inlet gas to chamber, (b) Static geometry rotated fluidized bed (c) Gas phase velocity vectors colored by the relative pressure (d) Solids velocity vectors colored by the solids velocity magnitude (Wilde, 2008)

As reported by Wilde and Broqueville (2008), a radial fluidization of the particle bed is created by introducing a radially inwards motion of the fluidization gas, towards a centrally positioned chimney. Precisely balancing the centrifugal force and the radial gas–solid drag force requires an optimization of the fluidization chamber design for each given type of particles. Solids feeding and removal can be continuous, via one of the final plates of the fluidization chamber. Provided that the solids loading is sufficiently high, a stable rotating fluidized bed in a static geometry is obtained. This requires to minimize the solids losses via the chimney. With the polymer particles, a dense and uniform bed is observed, whereas with the salt particles a less dense and less uniform bubbling bed is observed. Solids losses via the chimney are much more pronounced with the salt than with the polymer particles. Slugging and channelling occur at too low solids loadings.

Besides, Wilde and Broqueville (2008) claimed that hydrostatic gas phase pressure profiles along the outer cylindrical wall of the fluidization chamber is a good indicator of the particle bed uniformity and of channeling and slugging. The fluidization gas flow rate has only a minor effect on the occurrence of channeling and slugging: the solids loading in the fluidization chamber being the determining factor for obtaining a stable and uniform rotating fluidized bed in a static geometry.

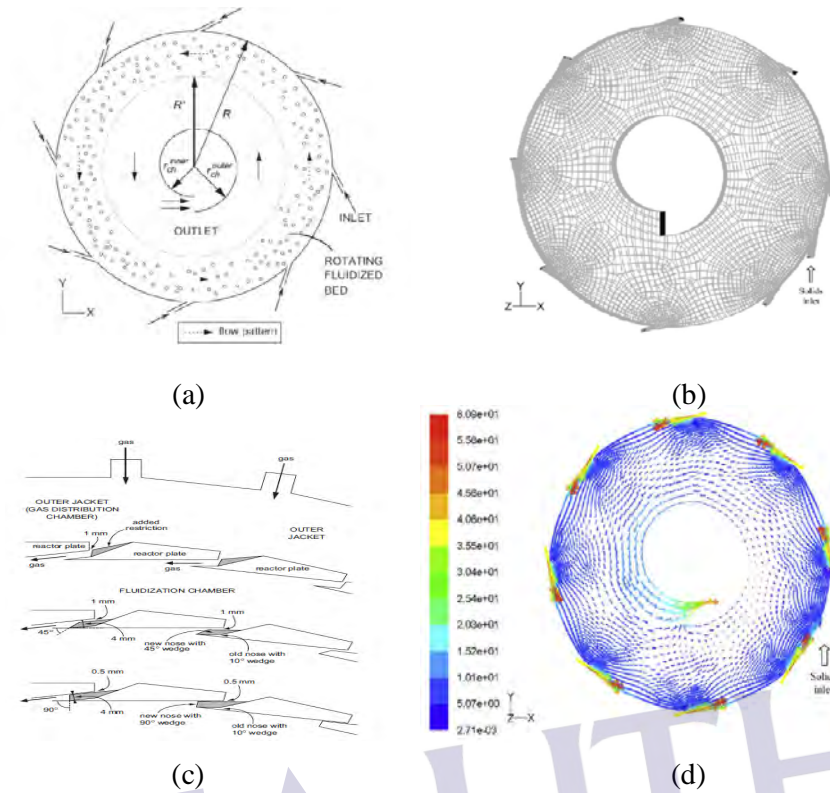
Wilde and Broqueville (2008) involved a multiple gas tangentially in the fluidization chamber in their study. Compared to this study, Wilde and Broqueville (2008) have injected the fluidization gas via multiple gas inlet slots in the outer cylindrical wall of the fluidization chamber and their claimed that by forcing the fluidization gas to leave via the top-end plate of the fluidization chamber is not a true rotating fluidized bed. Therefore, this study wants to investigate the characteristics of air flow distribution which are involved various velocity profiles that can lead more sustainability to the bed in a Swirling Fluidized Bed (SFB).

#### 2.4.2 Static Bed with Radial Chimney

Dutta *et al.* (2009) have provided a schematic conceptual representation of the rotating fluidized bed in static geometry (RFB-SG) is shown in Figure 2.6. The figure represents a cylindrical vessel, named fluidization chamber, with tangential openings (shown with arrows marked as INLET) positioned along the periphery of the cylinder.

Although, Dutta *et al.* (2009) stated that the rotating fluidized bed is meant to be operated in either axis of rotation, the simulations presented in this study are based on a vertical position of the bed. The fluidization gas is forced to leave the fluidization chamber via a central chimney, introducing a radial motion of the gas. The tangential gas velocity component will fluidized the particle bed and the produce a centrifugal force. The radial gas velocity component induces a radial drag force causing radial fluidization of the particle bed. Both component velocities will generate turbulence.





**Figure 2.6:** Static Bed with Radial Chimney; (a) A schematic 2D representation of the rotating fluidized bed in a static geometry (RFB-SG), (b) Perspective view of the set-up indicating 8 gas inlets (solids inlet and chimney outlet), (c) Schematic representation of gas and solid injector modification and (d) Vectors of gas velocity (m/s) showing stagnation zones downstream of the chimney outlet (Dutta *et al.*, 2009)

According to Dutta *et al.* (2009) the simulation in this study indicated that the motion inside the particle bed is mainly tangential due to the tangential gas injection, but radial fluidization is also of importance. The latter is determined by the ratio of the centrifugal force and the radial gas–solid drag force. The tangential slip velocity,  $v_{slip, t}$  is calculated to be much smaller than the radial slip velocity,  $v_{slip, r}$ . This large radial slip is expected to be the main contributor in the improvement of inter-phase heat and mass transfer. The gas flow pattern is found to be strongly influenced by the presence of the particle bed.

Dutta *et al.* (2008) found that, at the fluidization chamber design, the increase in radial gas-solid drag force is roughly proportional to a linear or quadratic increase

in the gas tangential velocity, while the increase in centrifugal force is roughly dependent to the square of the gas tangential velocity, thereby causing an increase in the gas flow rate. Within the operating range investigated in this study, an interesting feature observed with the modified designs is the decrease in solids losses with an increase in the gas flow rate. Restrictions in the gas inlet slots are shown to be useful to create a pressure drop over the inlet slots sufficiently high, compared to the solids centrifugal pressure. The gas inlet velocity is not influenced by this high pressure drop, as such the non-uniform bed behavior like slugging and channeling which is caused due to local gas velocity variations are avoided.

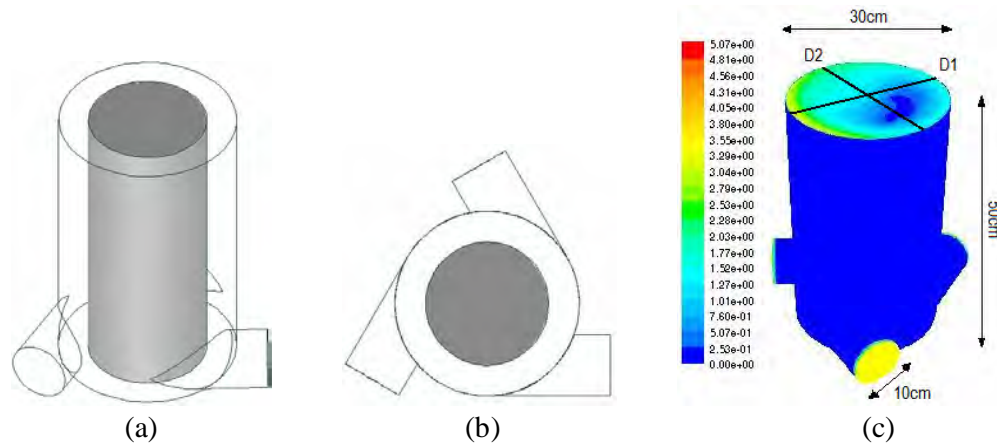
Alike as the previous study (Wilde and Broqueville, 2008), Dutta *et al.* (2008) have been studied the same geometry by using CFD simulations of the hydrodynamics behavior of rotating fluidized bed in static geometry. The two major velocity profile, namely: tangential velocity and radial velocity that have been indicated from Dutta *et al.* (2008) also been investigated in this study.

### 2.4.3 Plenum Chamber and Hub Geometries

Safiah *et al.* (2008) studied an analysis of the numerical of the complex flow dynamics in the three-inlet plenum chamber in SFB. This section plays a vital role in distributing the fluid before it enters the distributor. The flow in the plenum of the swirling fluidized bed is different and more complex than the situations studied earlier. The researchers has focused on the influence of the different geometries of flow modifying centre-bodies in the plenum on the flow uniformity and plenum pressure drop as to arrive at an optimum choice of the hub. From this study Safiah *et al.* (2008) found that the three tangential inlets into the chamber an exist as a full length cylindrical hub in the centre of the three-inlet plenum as shown in Figure 2.7 which yields good uniformity in the velocity profile at the distributor along the radial and tangential direction as well as low total pressure drop.





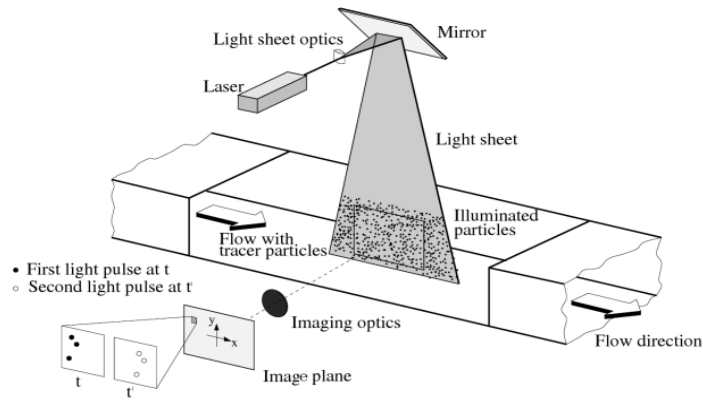


**Figure 2.7:** Three-inlets chamber with a full-length cylindrical hub at the center; (a) Isometric view, (b) Top view and (c) Velocity distribution (Safiah *et al.*, 2008)

## 2.5 Particle Image Velocimetry (PIV) Analysis of Air Distribution

A Particle Image Velocimetry (PIV) system consists of several sub system, in most application tracer particles have to be added to the flow. These particles have to be illuminated in a plane of the flow at least twice within a short time interval (Raffel *et al.*, 1965). The light scattered by the particles has to be recorded either on a single frame or on a sequence of frames. The displacement of the particle images between the light pulses has to be determined through evaluation of the PIV recordings. In order to be able to handle the great amount of data which can be collected by employing the PIV technique, sophisticated post-preprocessing is required (Raffel *et al.*, 1965).

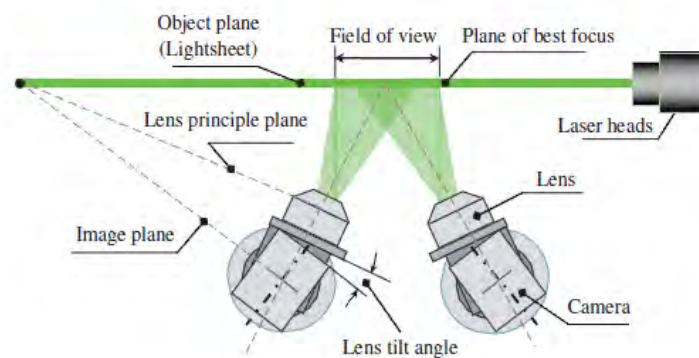
In Figure 2.8 a typical set-up of PIV recording in a wind tunnel is show a small tracer particles were added into the flow and the flow were illuminated twice by means of laser. The light scattered by the trace particles is recorded via a high quality lens. After a development photo-graphical PIV recording is digitized by means of a scanner, the output of the digital sensor is directly transferred to the memory of a computer (Raffel *et al.*, 1965).



**Figure 2.8:** Experimental arrangement for particle image velocimetry (PIV) in a wind tunnel (Raffel *et al.*, 1965)

### 2.5.1 Stereoscopic PIV

Stereoscopic PIV uses two cameras to view a flow field from two perspectives so that the out of the plane velocity component can be measured (Raffel *et al.*, 1998). The two components of velocity are nominally perpendicular to the camera optical axis, which are measured from each camera viewpoint. The pair of 2D velocity vectors for a point in the flow is then combined to yield a three dimensional velocity vector (Raffel *et al.*, 1998). Among several optical arrangements of the two cameras, the Scheimpflug configuration was found to be the best layout as show in Figure 2.9 below:

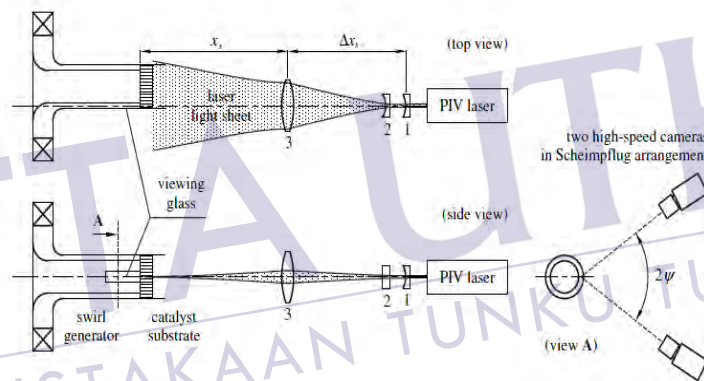


**Figure 2.9:** Scheimpflug stereoscopic camera configuration (Raffel *et al.*, 1998)

This technique has been applied in this study. As Raffel *et al.* (1998) reported that by combining the vector fields from the two cameras, the three dimensional velocity fields for the plane in the fluid had been measured.

### 2.5.1.1 PIV Stereoscopic Camera Arrangement and Calibration

PIV stereoscopic camera arrangement shown in Figure 2.10 corresponds to the set-up described by Peersons *et al.* (2008). The larger the camera elevation angle  $\Psi$ , the more accurately  $W$  is determined (here:  $\Psi = 35^\circ$ ). The camera and lens configuration satisfies the Scheimpflug condition. A metal foil enclosure surrounds the camera lenses and swirl tube to reduce the level of background illumination, resulting in high-contrast images. The symmetric camera placement ensures identical light scattering characteristics in both cameras (Peersons *et al.*, 2008) A stereoscopic calibration is performed in accordance with Willert (1997). Due to the confined geometry, a single level calibration target is made that fits into the annulus; with two Cartesian dot mark grids on both sides of the target (Peersons *et al.*, 2008).



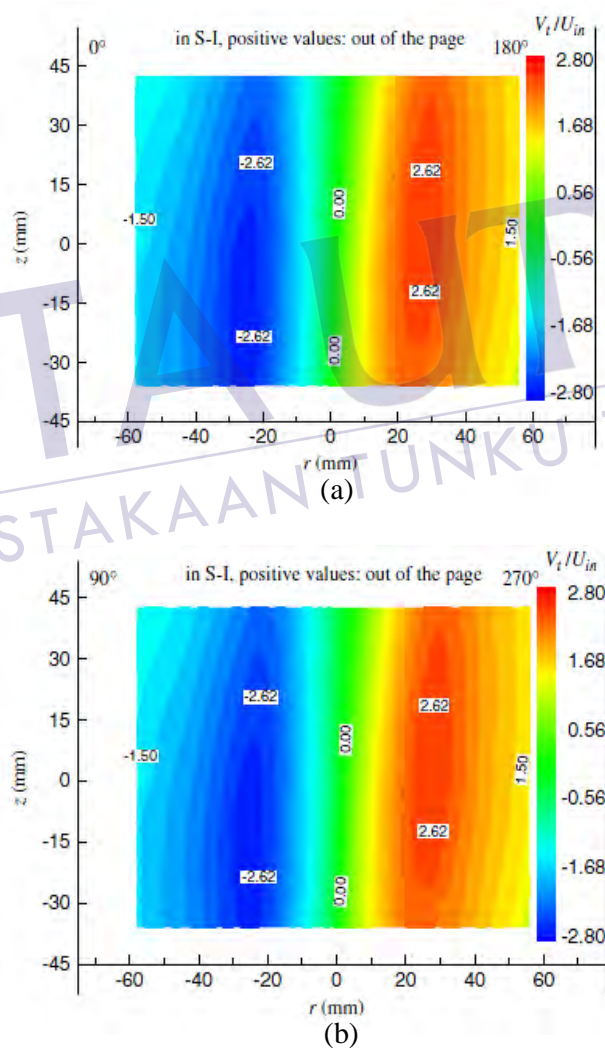
**Figure 2.10** : Optical arrangement of laser light sheet and cameras  
(Peersons *et al.*, 2008)

As a conclusion, study by Peersons *et al.* (2008) has been followed for this study, which involved PIV stereoscopic camera arrangement and calibration to get the suitable and best position of the area interrogation at the blade distributor in Swirling Fluidized Bed (SFB).

### 2.5.1.2 Stereoscopic PIV Studies on the Swirling Flow Structure in a Gas Cyclone

This study is an experiment done to study the swirling flow in a gas cyclone to improve its design (Liu *et al.*, 2006). The three dimensional velocity components of

swirling flow are the main focus in this study using a Particle Image Velocimetry with stereoscopic adjustments (Liu *et al.*, 2006). With the common settings of a PIV system, these studies have gained fruitful results as shown in Figure 2.11 below. The Figure 2.11 is shows the distribution of time-averaged tangential velocity in the cylindrical separation space (S-I) which across both 0-180° and 90-270° sections. Based on this study (Liu *et al.*, 2006), the plane contour results at the interrogation area in the Swirling Fluidized Bed (SFB) has been extracted using a Particle Image Velocimetry. Therefore, results this study will validate the plane contour of CFD simulation.



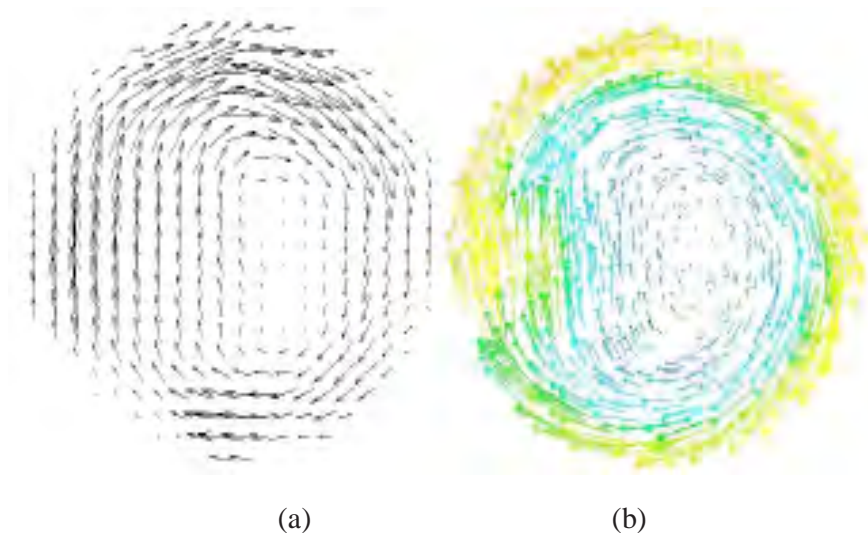
**Figure 2.11** : Tangential velocity distribution in the cylindrical separation space across both (a) 0-180° and (b) 90-270° sections (Liu *et al.*, 2006).

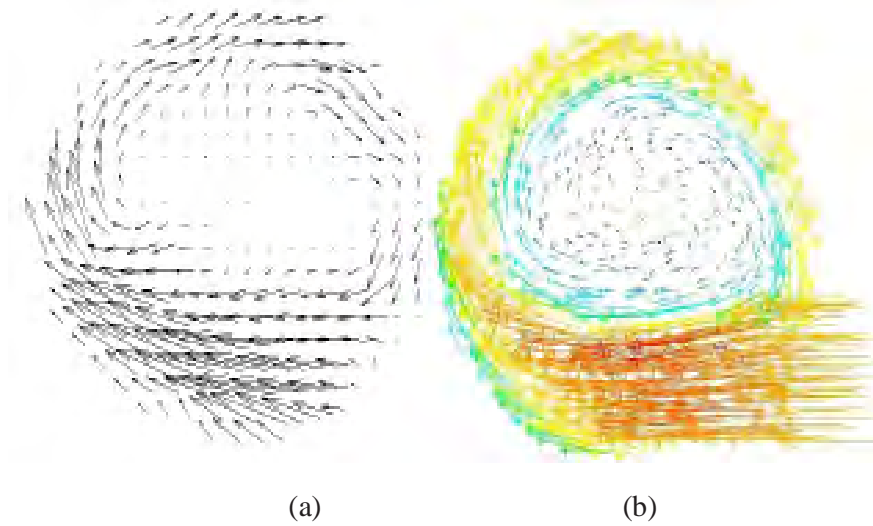
### 2.5.1.3 Stereoscopic PIV Studies on Plenum Chamber of Swirling Fluidized Bed (SFB)

There are very limited of publication that has been conducted to validate numerical simulation result through experimental work data which have be analyzed of a plenum chamber in a swirling fluidized bed. Othman *et al.* (2009) are carried out an experimental and numerical study to investigate the aerodynamics behavior in the plenum chamber in a SFB.

Based on this study, Othman *et al.* (2009) expected to lead an optimum design that will produce an optimum performance characteristic of flow distribution in a SFB. By using a numerical simulation method (CFD) the air flow of plenum chamber has been predicted and being validate with experimental work data (PIV) to find agreement between the two methods of studying of air flow in fluidized bed (Othman *et al.*, 2009).

From this study the results have shown an average of 15.6% discrepancy and it is confirmed that good agreement is obtained (Othman *et al.*, 2009). Figure 2.12 shown the following of the 2-D airflow vectors in the plenum chamber and it's being captured using PIV apparatus and FLUENT simulations (Othman *et al.*, 2009). As a conclusion, the present study has a similar study with Othman *et al.* (2009) and based on his PIV experimental set-up, this study will be easy to follow.





**Figure 2.12 :** Velocity vector on the top plane (above) & bottom plane (bottom);

(a) PIV and (b) CFD (Othman *et al.*, 2009).



PTTA UTHM  
PERPUSTAKAAN TUNKU TUN AMINAH



## CHAPTER III

### METHODOLOGY

Air flow distribution in a swirling fluidized bed has been investigated using Computational Fluid Dynamics (CFD) software which consists of GAMBIT 2.4.6 & FLUENT 6.3.26 applications. Afterwards, the numerical simulation result has been validated through an experimental work data by using a Particle Image Velocimetry (PIV). The swirling fluidized bed has been modeled in SolidWork due to the user friendly applications. The deviation of the chosen methodology to the experimental data is then determined to arrive at the average discrepancy. The two parameters; namely, the types of tangential entry plenum chamber and the angle inclination of blade distributor have been changed in this study to obtain the correlation between the blades distributor configuration with the air flow distribution in a SFB. The agreement between these methods will validate the numerical method.

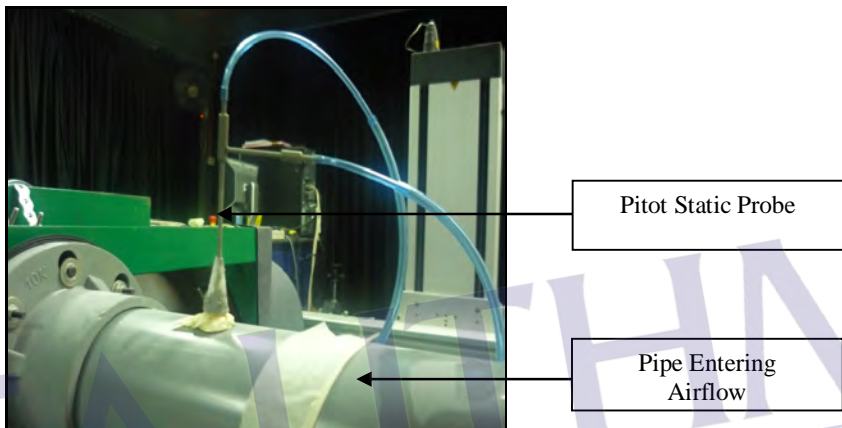
#### 3.1 Experimental Set-up

The experimental system has been conducted to verify the numerical approaches which have be uses to investigate the air flow distribution in a SFB. Data from this experimental will provides the least deviation between numerical simulation result and experimental work data afterward a numerical methodology will be selected.

##### 3.1.1 Instrumentations

The airflow rate into double entry plenum chamber has been measured by using a pitot static probe inserted into the pipe as shown in Figure 3.1. It measures a static

and stagnation pressure in both locations at tangential entry of pipe. A digital manometer of resolution of 0.1 Pa has been used to measure the pressure differential across the pitot static probe. It has been measured in both static and stagnation pressure on the entry of plenum chamber, thus permits determination of the inlet air flow velocity from Equation 3.1 (Pritchard and Leylegian, 2011). With the fully developed flow at different radial positions inside the pipe, the air velocity can be measured at the centre of axis,  $v_c$ .



**Figure 3.1:** Positioning of the pitot static probe inside plenum inlet

Bernoulli's Equation for air reduces to:

$$P_0 - P_2 = \frac{1}{2} \rho v_c^2 \quad (3.1)$$

$$v_c = \sqrt{\frac{2(P_0 - P_2)}{\rho}} \quad (\text{derived from equation 3.1}) \quad (3.2)$$

Static pressure tappings were provided at three (3) planes on the plenum chamber. One (1) plane is 5 cm above the distributor while the others two (2) located at the tangential entry pipe (15 cm away from the column) as shown in Figure 3.1. The purpose for measuring the two (2) points at the tangential entry pipe will be verify the same air flow velocity inlet to plenum chamber. Four tappings were made on the above distributor at the surface of acrylic column as shown in Figure 3.2 and one at the inlet pipe. With the existence of multi tappings it should have an average



## REFERENCES

ANSYS UK Ltd. ANSYS: *ANSYS CFX Introduction*. Canonsburg (U.K): Release 12.0 April 2009.

Arromdee P. and Kuprianov V.I. (2012). Combustion of Peanut Shells in a Cone-Shaped Bubbling Fluidized-Bed Combustor using Alumina as the Bed Material. *Applied Energy* 97(2012), pp. 470-482.

Batcha, M.F.M., Nawawi, M.A.M. Sulaiman, S.A. and Raghavan, V.R. (2013). Numerical Investigation of Air Flow in a Swirling Fluidized Bed. *Asian Journal of Scientific Research* 6(2), pp. 157-166.

Batcha, M.F.M and Raghavan, V.R. (2011). Experimental Studies on a Swirling Fluidized Bed with Annular Distributor. *Journal of Applied Science*. 11(11), pp. 1980-1986.

Boysan, F. (1982). A Fundamental Mathematical Modeling Approach to Cyclone Design. *Institution of Chemical Engineers* 60. pp. 222-230.

Chakritthakul S. and Kuprianov V.I. (2011). Co-Firing of Eucalyptus Bark and Rubberwood Sawdust in a Swirling Fluidized-Bed Combustor using an Axial Flow Swirler. *Bioresource Technology* 102(2011), pp. 8268-8278.

C. Willert. (1997). Stereoscopic Digital Particle Image Velocimetry for Applications in Wind Tunnel Flows. *Measurement Science and Technology* 8(1997), pp. 1465-1479.

- Depypere, F., Pieters, J.G. and Dewettinck, K. (2004). CFD Analysis of Air Distribution in Fluidised Bed Equipment, *Powder Technology*, 145(2004), pp. 176 – 189.
- Dutta, A., Ekatpure, R.P., Heynderickx, G.J., Broqueville, A.D., and Marin, G.B. (2009). Rotating Fluidized Bed with a Static Geometry : Guidelines for Design and Operating Conditions. *Chemical Engineering Science*, 65(2010), pp. 1678-1693.
- F. Ouyang and O. Levenspiel. (1986). Spiral Distributor for Fluidized Beds. *Ind. Eng. Chem. Process Des. Dev.*, 25(1986), pp. 504-507.
- Gupta, C.K and Sathiyamoorthy, D. (1999). Fluid Bed Technology in Materials Processing. New York: CRC Press.
- Harish Kumar, S. and Murthy, D.V.R. (2010). Minimum Superficial Fluid Velocity in Gas-Solid Swirled Fluidized Bed. *Chemical Engineering and Processing*, 49(2010), pp. 1095-1100.
- Howard, J.R. *Fluidized Bed Technology-Principles and Applications*. New York: Adam Hilger. 1989.
- J. Shu, V.I. Lakshmanan and C.E. Dodson. (2000). Hydrodynamic Study of Toroidal Fluidized Bed Reactor. *Chemical Engineering and Processing*, 39(2000), pp. 499-506.
- Kaewklum R. and Kuprianov V.I. (2009). Experimental Studies on A Novel Swirling Fluidized-Bed Combustor Using an Annular Spiral Air Distributor. *Fuel*, 89(2010), pp. 43-52.
- Kaewklum R., Kuprianov V.I., Janvijitsakul K., Arromdee P. and Chakritthakul S. (2008). A Study of Firing Rice Husk in a Swirling Fluidized-Bed Combustor Using Annular Spiral Air Distributor. *International Conference on Energy Planning, Energy Saving, Environmental Education*. Corfu:Greece. 2008.



PT TAA UTHM  
PERPUSTAKAAN TUN TUN AMINAH

Kaewklum R., Kuprianov V.I. and Douglas P.L. (2009). Hydrodynamics of Air-Sand Flow in a Conical Swirling Fluidized Bed: a Comparative Study Between Tangential and Axial Air Entries. *Energy Conversion and Management*, 50(2009), pp. 2999-3006.

Kamil, M., Fahmi, M., and Raghavan, V.R. (2007). Parametric Analysis on an Analytical Model of a Swirling Fluidized Bed. *Proc. of 3<sup>rd</sup> IASTED Asian Conf. On Power & Energy Systems*. Phuket: Thailand, Retrieved April 2–4.

Kashyap, M., Chalermssinsuwan, B. and Gidaspow, D. (2011). Measuring Turbulence in Circulating Fluidized Bed using PIV Techniques. *Particuology*, 9(2011), pp. 572-588.

Lin C.H., Chyang, C.S., Teng, J.T. and Hsu, C.H. (1998). A Study on the Swirling Flow Field in the Freeboard of a Vortexing Fluidized Bed Combustor. *JSME International Journal, Volume 41*(1998).

M. Raffel, C. Willert, S. Wereley, J. Kompenhans. *Particle Image Velocimetry: A Practical Guide*. 2<sup>nd</sup> Ed. Springer-Verlag Berlin. 1965.

Nag, P.K. *Power Plant Engineering*, Tata McGraw-Hill, Delhi. 2008.

Othman, S., Wahab, A.A. and Raghavan, V.R. (2008). Entrance type into the Plenum Chamber of a Swirling Fluidized Bed. *International Conference on Science & Technology : Application in Industry & Education*. UiTM, Penang: Malaysia. 2008.

Othman, S., Wahab, A.A. and Raghavan, V.R. (2008). Numerical Study of the Plenum Chamber of a Swirling Fluidized Bed. *Proc. of International Conference on Mechanical & Manufacturing Engineering*. Johor Bahru: Malaysia.



PTT A U T M  
PERPUSTAKAAN TUNJUKU AMINAH

- Othman, S., Wahab, A.A. and Raghavan, V.R. (2009). Statistical Analysis on the Design of Flow Modifying Centre-Bodies in a Plenum Chamber. *CFD Letters*, 1(2), pp. 78-86.
- Othman, S., Wahab, A.A. and Raghavan, V.R. (2009). Validation by PIV of the Numerical Study of Flow in the Plenum Chamber of a Swirling Fluidized Bed. *CFD Letters*, 2(2), pp. 85-96.
- Othman, S. (2010). *Aerodynamics Study of Plenum Chamber in a Swirling Fluidized Bed*. Universiti Tun Hussein Onn Malaysia: Phd Thesis
- Ozbey, M. and Soylemez, M.S. (2005). Effect of Swirling Flow on Fluidized Bed Drying of Wheat Grains. *Energy Conversion & Management*, 46(2005), pp. 1495-15.
- Patil, K.D. (2007). "Mechanical Operations : Fundamental Principle and Applications.", Nirali Prakashan, Maharashtra.
- Raffel, M., Willert, C.E., Kompenhans, J. (1998). Particle Image Velocimetry, A Practical Guide. Springer, Berlin.
- Pritchard, P.J. and Lylegian, J.C. Fox and McDonald's Introduction to Fluid Mechanics. New York: Wiley. 2011.
- Sheikh Mohd Mustaffa, S.E. (2010). Numerical Investigation of Air Flow Distribution in a Swirling Fluidized Bed. Universiti Tun Hussein Onn Malaysia: Degree's Thesis.
- Sheng T.C., Sulaiman S.A. and Vinod K.V. (2012). One-Dimensional Modeling of Hydrodynamics in a Swirling Fluidized Bed. *International Journal of Mechanical & Mechatronics Engineering IJMME-IJENS* 12(6), pp. 13-22.
- Sreenivasan, B. and Raghavan, V.R. (2002). Hydrodynamics of a Swirling Fluidized Bed. *Chemical Engineering and Processing*, 42(2002), pp. 99-106.



PTT UTHM  
PERPUSTAKAAN TUNKU TUN AMINAH

T. Peersons, M. Vanierschot, E.V. den Bulck. (2008). Stereoscopic PIV measurements of swirling flow entering a catalyst substrate. Trinity College Dublin, *Experimental Thermal and Fluid Science*, 32 (2008), pp. 1590-1596.

Versteeg, H.K. and Malalasekera, W. *An Introduction to Computational Fluids Dynamics*. 2nd Ed. Essex: Pearson Education Limited, 2007.

Vinod K.V., Batcha M.F.M and Raghavan V.R. (2011). Study of the Fluid Dynamic Performance of Distributor Type in Torbed Type Reactors. *Engineering e-Transaction Vol. 6(1)*, pp. 70-75

Vinod K.V., Jun Goo J.J., Sing C.Y., Sulaiman S.A. and Raghavan V.J. (2012). Variation of Bed Pressure Drop with Particle Shapes in a Swirling Fluidized Bed. *Journal of Applied Science*. ISSN 1812-5654 from doi:10.3923/jas.2012.

Wellwood, G.A. (1997). Predicting the Slip Velocity in a Torbed Reactor using an Analogy to Thermodynamics. *Proc. 14<sup>th</sup> International Conference Fluid Bed Combustion*. Vancouver: Canada. pp. 618-628.

Wilde, J.D. (2008). Experimental Investigation of A Rotating Fluidized Bed in A Static Geometry. *Powder Technology*, 183(2008), pp. 426-435.

Z. Liu, Y. Zheng, L. Jia, J. Jiao, Q. Zhang. (2006). Stereoscopic PIV Studies on the Swirling Flow Structure in a Gas Cyclone. *Chemical Engineering Science*, 61(2006), pp. 4252-4261



PTTA UTHM  
PERPUSTAKAAN TUNJUKU AMINAH